




Dyna CAD/CAM - **3shape** Library Guide

Accurate, individual manufactu

Dutch Technology



 your comfort is our goal!

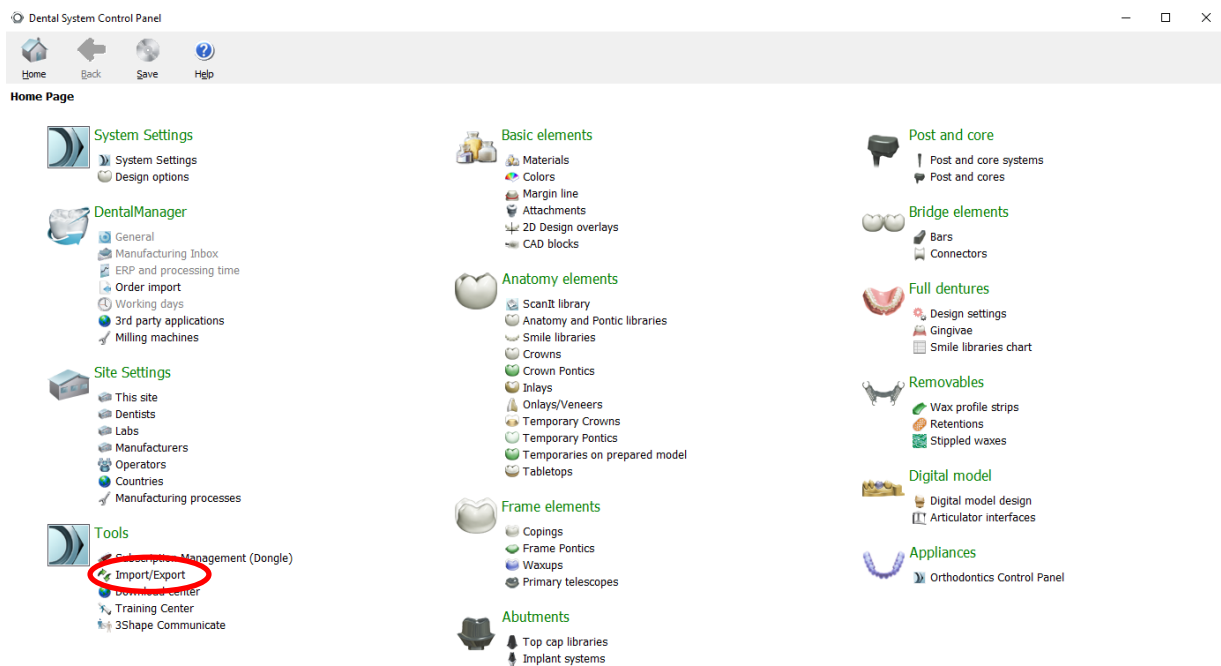
Dyna Helix Implant Library Installation guide for 3Shape®

Open 3Shape Dental System Control Panel:

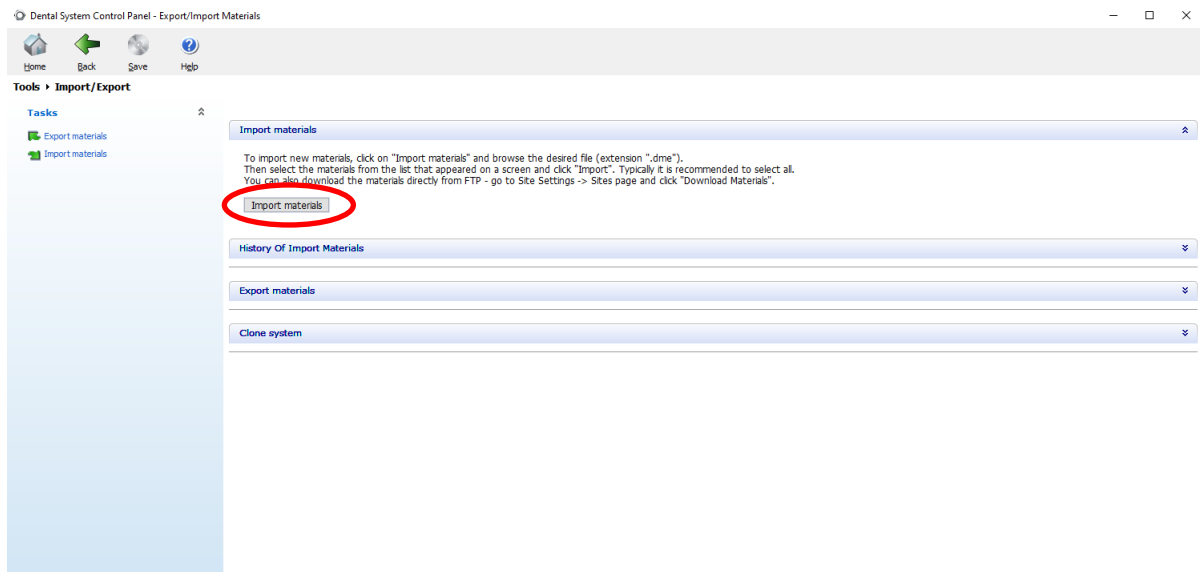
- Use the desktop item  to start the 3Shape Dental System Control Panel

Installation of the library:

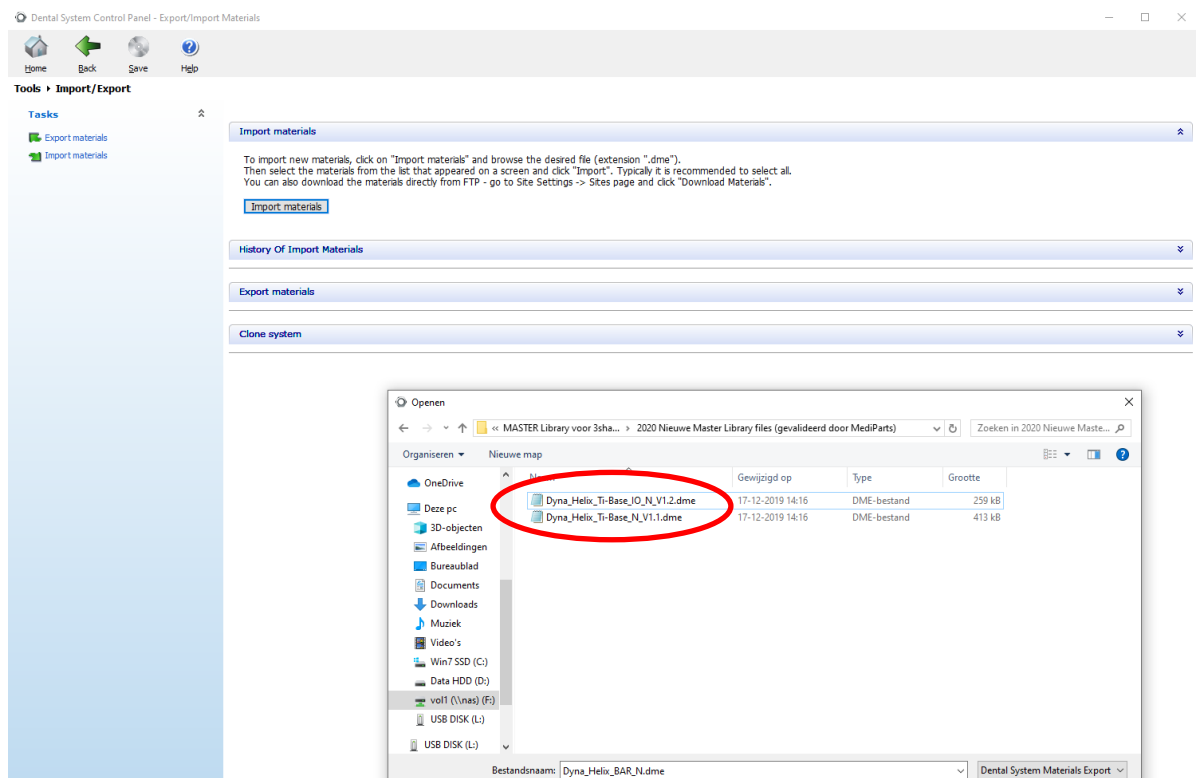
- select Tools - Import/Export



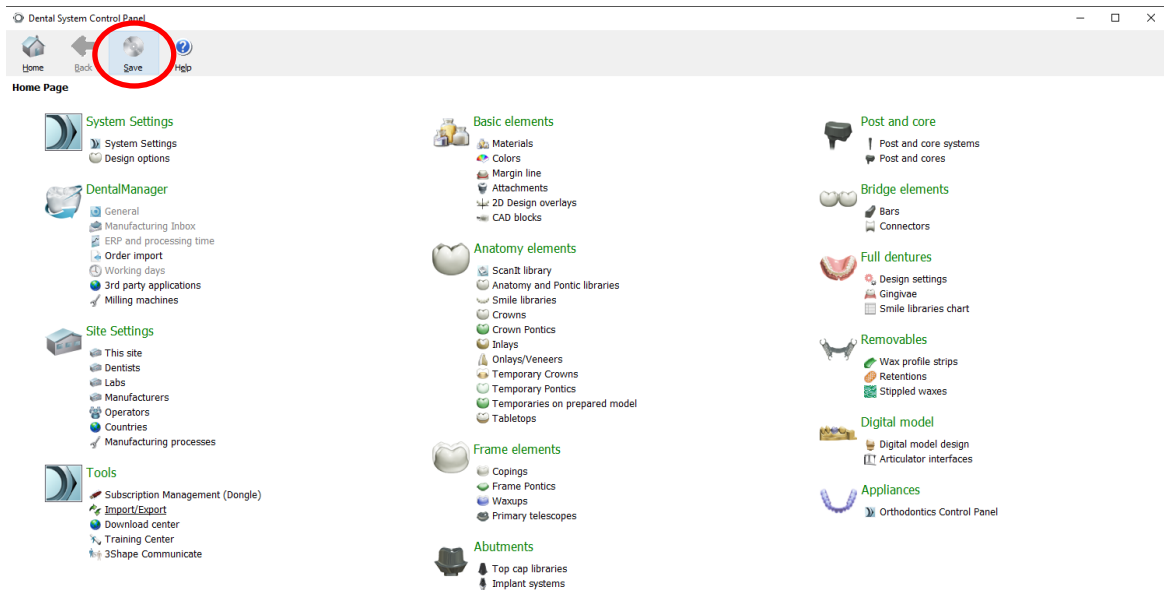
- Click on Import materials



- Select one of the library files to be imported



- Select Save and Exit the Control Panel



The installation of the library is complete and ready for use.

Att. You can install more libraries this way